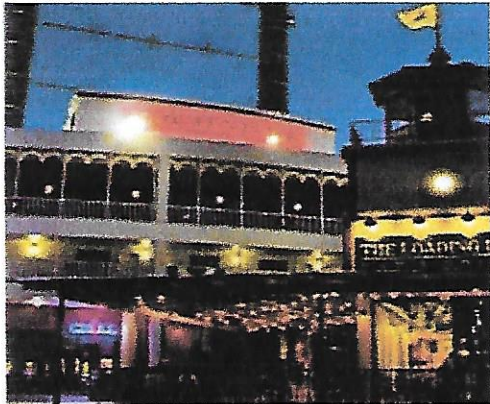


# LAUGHLIN, NEVADA

TUESDAY FEBRUARY 27<sup>th</sup>, WEDNESDAY FEBRUARY 28<sup>th</sup> & THURSDAY MARCH 1<sup>st</sup>, 2018

**"COLORADO BELLE"**



ONLY: \$ 190.<sup>00</sup>

DOUBLE

OCCUPANCY

**TUESDAY-FEBRUARY 27<sup>th</sup>, 2018**—**LEAVE SUNSCAPE PARK AT 6:00 AM**

WILL **STOP** ALONG WAY FOR **BREAKFAST** AND **ALSO COUPLE STRETCH STOPS IF NECESSARY**

**ARRIVE LAUGHLIN APPROX 12:00 PM**

**THURSDAY-MARCH 1<sup>st</sup>, 2018**—**LEAVE LAUGHLIN AT 3:00 PM**

DEPENDING ON STOPS **ARRIVE AT SUNSCAPE PARK 8:00 PM TO 9:00 PM**

## **INCLUDES**

**BUS RIDE FROM SUNSCAPE RV PARK TO LAUGHLIN, NEVADA**

**BUS RIDE FROM LAUGHLIN, NEVADA TO SUNSCAPE RV PARK**

**HANDLE BAGGAGE ON AND OFF COACH**

**TWO (2) NIGHTS AT COLORADO BELLE HOTEL AND CASINO**

**ONE (1) FREE CHOICE MEAL (BREAKFAST, LUNCH OR DINNER) PER PERSON**

**ONE (1) FREE BREAKFAST PER PERSON**

**PLEASE CONTACT SHIRLEY GROPP FOR MORE INFO: [sgtravel@nckcn.com](mailto:sgtravel@nckcn.com) 785-614-2156**

**NEED AT LEAST FORTY (40) TO SIGN TO GO! **PAY BY FEBRUARY 15<sup>th</sup>, 2018****